



11 RED HALL GARDENS

LEEDS, LS17 8NG

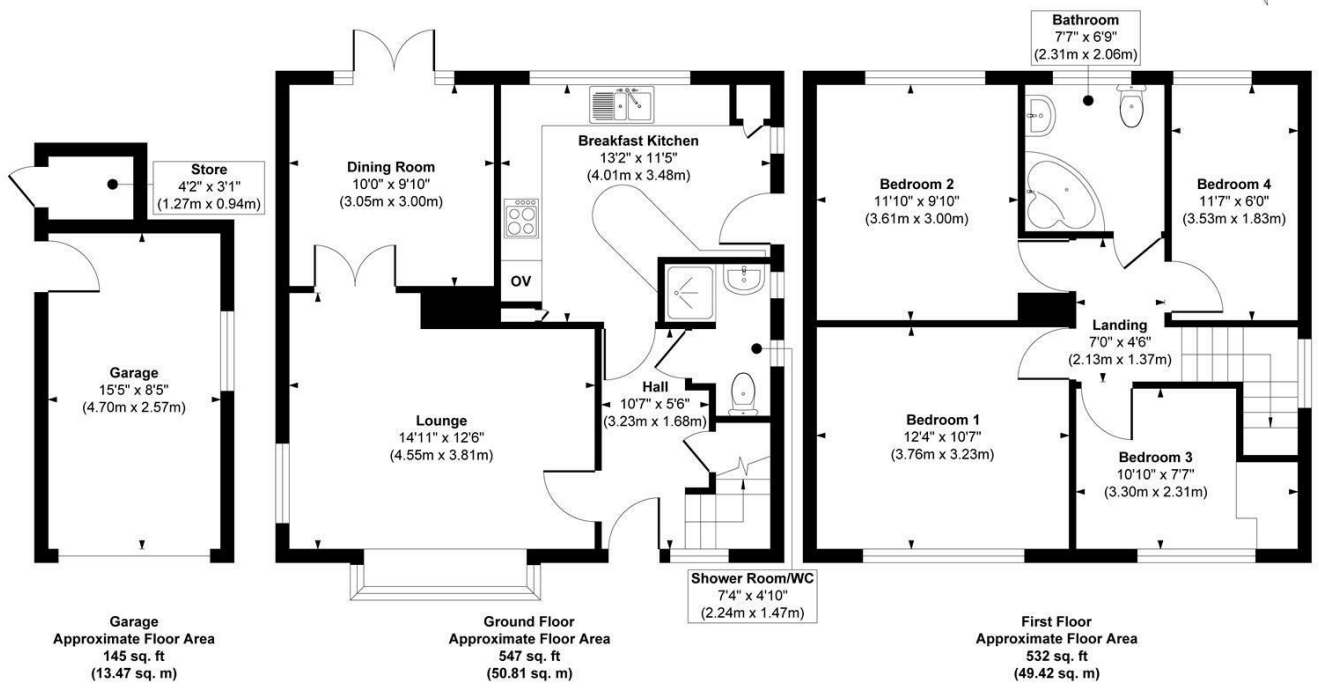
£425,000
FREEHOLD

Nestled in the highly desirable residential area of Red Hall Gardens, this impressive four-bedroom detached home offers a masterclass in functional family design. Combining generous social spaces with well-proportioned private quarters, the property extends to approximately 1,224 square feet (including the garage), providing a versatile layout perfect for the growing modern family.

MONROE

SELLERS OF THE FINEST HOMES

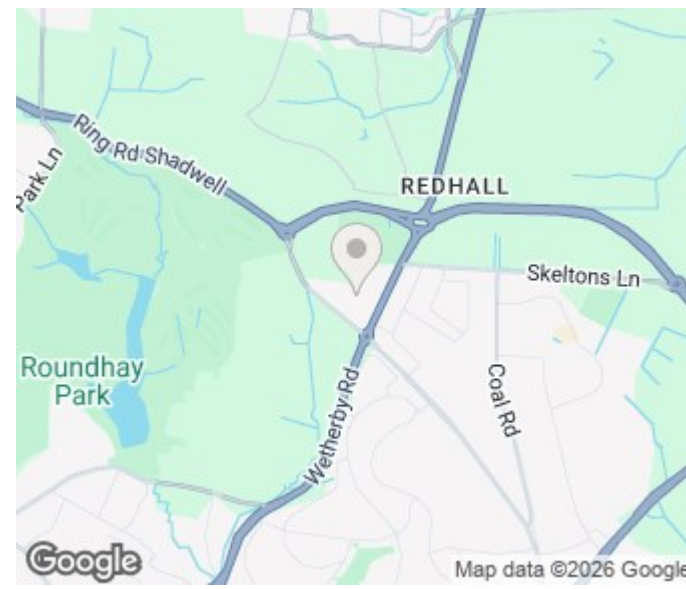
Red Hall Gardens, Leeds



Approx. Gross Internal Floor Area 1224 sq. ft / 113.70 sq. m (Including Garage)

Illustration for identification purposes only, measurements are approximate, not to scale.

Copyright © Show Home.



Energy Efficiency Rating		Current	Potential
Very energy efficient - lower running costs			
(92 plus) A			
(81-91) B			
(69-80) C			
(55-68) D		67	80
(39-54) E			
(21-38) F			
(1-20) G			
Not energy efficient - higher running costs			
England & Wales		EU Directive 2002/91/EC	

Agents Note: Whilst every care has been taken to prepare these particulars, they are for guidance purposes only. All measurements are approximate and are for general guidance purposes only and whilst every care has been taken to ensure their accuracy, they should not be relied upon and potential buyers/tenants are advised to recheck the measurements

Alwoodley Sales
716 King Lane Alwoodley
Leeds
West Yorkshire
LS17 7BA

0113 870 4443
hello@monroestateagents.com
www.monroestateagents.com

MONROE

SELLERS OF THE FINEST HOMES